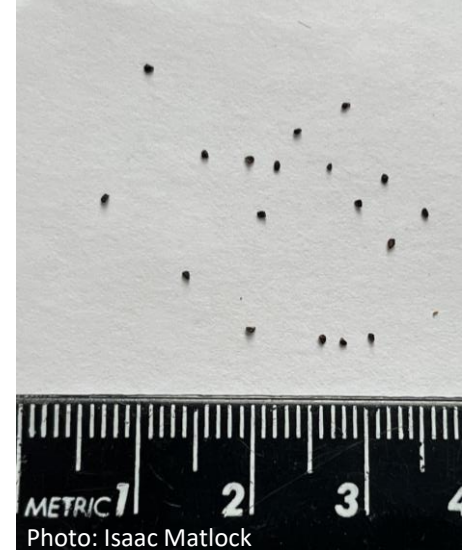


Smooth Beard-tongue – *Penstemon laevigatus*



Smooth Beard-tongue – *Penstemon laevigatus*

Habitat Notes:

Most characteristic of moist, low fields, meadows, roadsides, and clearings; less numerous in natural habitats such as floodplain forest, swamps, drier forests and woodlands on base-rich soils.

Species Identification:

- Lower lobes of corolla essentially equaling the upper lobes; corolla throat with little ridging on its floor; sterile filament moderately bearded.
- Anthers glabrous; corolla purple.
- Sepals less than 8mm long; leaves obscurely serrate; corolla lobes deflexed.
- Corolla 15-22mm long.
- Capsules 4-14mm.

Cultural Conditions:

- Full sun to deep shade
- High organic matter soil
- Good drainage, moist, occasionally dry

Ecological Benefits:

- Wildlife: This plant provides nectar for a variety of pollinators.
- Common Buckeye larvae rely on this leaves of this species for food.
- Hummingbirds are also attracted to the blooms.

Growing Protocol:

- Seeds require no stratification: (A)

Collection Information:

- Beaked seed pod
- Ready late summer
- Collect pods when brown or opening.
- Can crush the pods to obtain seeds.
- If pods have opened, put inflorescences in a bag and the stem to ensure seeds fall inside the bag.

Pests & Disease:

- No serious threats might may be susceptible to leaf spot, rust, powdery mildew, and southern blight